



Clarifying Filter

**EcoAce<sup>®</sup> PLUS**





# Clarifying Filter EcoAce® PLUS

EcoAce PLUS is our newly improved clarifying filter, resulting from our company's 60 years of experience on filtration technology and our response to customers' needs. Great efforts were made to obtain better filtration performance, reduced installation space, reliable sealing construction and increased ease in handling.



**1** Improved filter medium sealing for better filtration performance of cartridge

**2** Hinged-cover to open/close unit without detaching cover during media replacement

**3** Swing bolt + wing nut, no need for tools

**4** Its outer shell is bolted together for reliable sealing construction

**5** A selection of various media is available to suit your intended use

**6** Resin-molded product for much more lightweight construction

Made from glass fiber reinforced polypropylene for excellent thermal and chemical resistance

**7** Affixed latch to fasten its air-release hose and prevent liquid splattering

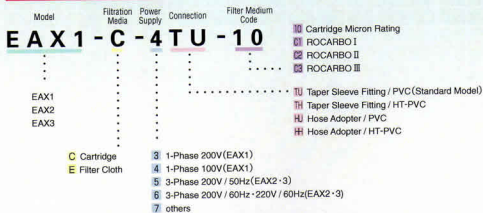
**8** Larger priming tank for better operability  
1.6 times bigger compared to previous model

**9** Union connection of pressure gauge and drain valve to main body for improved ease of maintenance

**10** Reduced installation space  
About 23% lesser space than previous model

**11** Equipped with high performance magnetic drive pump  
Pump exclusively for use with acidic gold plating solution is also available

## Model Identification



**EcoAce® PLUS 1**

Filtration Capacity 700~1200 L/h



**EcoAce® PLUS 2**

Filtration Capacity 1000~2200 L/h



**EcoAce® PLUS 3**

Filtration Capacity 1500~2500 L/h

## Specifications

PPGF: Glass Fiber Reinforced Polypropylene PP: Polypropylene PVC: Polyvinyl Chloride HT-PVC: High Temperature Polyvinyl Chloride EPDM: Ethylene Propylene Diene Rubber

Model	EAX1	EAX2	EAX3
Filtration Capacity	700 ~ 1,200 L/h	1,000 ~ 2,200 L/h	1,500 ~ 2,500 L/h
Rating Tank Capacity (Volume) <sup>#1</sup>	50 ~ 250 L	100 ~ 500 L	250 ~ 600 L
Filtration Media	Cartridge 10 mesh×1 Filter Cloth 0.1 μm	20 mesh×1 0.2 μm	30 mesh×1 0.3 μm
Temperature	under 80 °C (HT-PVC)		
Max. Pressure	0.1 MPa (at 25°C · water) <sup>#2</sup>		0.25 MPa (at 25°C · water)
Pump Model	MD-4DR	MD-70R2M □-3S	MD-70R2M □-3S
Motor	1-Phase 100 V 65 w	3-Phase 200V 180 / 216w	3-Phase 200V 180 / 216w
Dimensions (D×W×H)	511×269×807 mm	505×269×1,057 mm	505×269×1,314 mm
Weight	11.5 kg	15.2 kg	17 kg
Main Body / Gasket Material	PPGF / PP · EPDM		
Inlet / Outlet	Taper Sleeve Fitting 26 mm O.D. (Out Diameter)		
Accessories	Taper Sleeve Ball Foot Valve (PVC)		

#1 In case of use in a plating process with 3-4 tank turnovers per hour. #2 Pump Max. Pressure

## Model Identification

**EAX4-C-5TU-10**

Model: EAX4, EAX8, EAX12, EAX16, EAX24, EAX32  
 Filtration Media: C, E  
 Power Supply: 5, 6, 7  
 Connection: TU, TH, H, HH  
 Filter Medium Code: 10

10 Cartridge Micron Rating  
 01 ROCARBO I  
 02 ROCARBO II  
 03 ROCARBO III

TU Taper Sleeve Fitting / PVC(Standard Model)  
 TH Taper Sleeve Fitting / HT-PVC  
 H Hose Adaptor / PVC  
 HH Hose Adaptor / HT-PVC

5 3-Phase 200V / 50Hz  
 6 3-Phase 200V / 60Hz ~ 220V / 60Hz  
 7 others

C Cartridge  
 E Filter Cloth



**EcoAce® PLUS 4**

Filtration Capacity 2500 ~ 6000 L/h



**EcoAce® PLUS 8**

Filtration Capacity 4000 ~ 12000 L/h



**EcoAce® PLUS 12**

Filtration Capacity 6000 ~ 14000 L/h

## Specifications

PPGF: Glass Fiber Reinforced Polypropylene PP: Polypropylene PVC: Polyvinyl Chloride HT-PVC: High Temperature Polyvinyl Chloride EPDM: Ethylene Propylene Diene Rubber

Model	EAX4	EAX8	EAX12
Filtration Capacity	2,500 ~ 6,000 L/h	4,000 ~ 12,000 L/h	6,000 ~ 14,000 L/h
Plating Tank Capacity Volume <sup>#1</sup>	400 ~ 1,200 L	800 ~ 2,400 L	1,000 ~ 2,800 L
Filtration Media	Cartridge 10 inch×4 Filter Cloth 0.45 m <sup>2</sup>	20 inch×4 0.9 m <sup>2</sup>	30 inch×4 1.35 m <sup>2</sup>
Temperature	under 80 °C (HT-PVC)		
Max. Pressure	0.18 MPa (at 25° C · water) <sup>#2</sup>	0.22 MPa (at 25° C · water) <sup>#2</sup>	0.25 MPa (at 25° C · water)
Pump Model	MD-100R □ -3S	MX-400RE □ -2-3S	MX-401RE □ -2-3S
Motor	3-Phase 200V 265 / 260W	3-Phase 200V 400W	3-Phase 200V 750W
Dimensions [D×W×H]	635×389×964 mm	665×404×1,219 mm	680×417×1,475 mm
Weight	25 kg	32 kg	40 kg
Man Body / Gasket Material	PPGF/PP · EPDM		Taper Sleeve Fitting-48 mm O.D.
Inlet / Outlet	Taper Sleeve Fitting 32 mm O.D.		Foot Valve(PVC)
Accessories	Ball Foot Valve(PVC)		

#1 In case of use in a plating process with 3-4 tank turnovers per hour. #2 Pump Max. Pressure



### EcoAce® PLUS 16

Filtration Capacity 8000~16000 L/h

### EcoAce® PLUS 24

Filtration Capacity 10000~24000 L/h

### EcoAce® PLUS 32

Filtration Capacity 12000~27000 L/h

#### Specifications

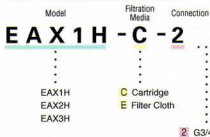
PPGF: Glass Fiber Reinforced Polypropylene PP: Polypropylene PVC: Polyvinyl Chloride HT-PVC: High Temperature Polyvinyl Chloride EPDM: Ethylene Propylene Diene Rubber

Model	EAX16	EAX24	EAX32
Filtration Capacity	8,000 ~ 16,000 L/h	10,000 ~ 24,000 L/h	12,000 ~ 27,000 L/h
Rating Tank Capacity Volume <sup>*)</sup>	1,500 ~ 4,000 L	3,000 ~ 5,000 L	3,500 ~ 6,500 L
Filtration Media	Cartridge 20 inch×8	30 inch×8	30 inch×8 - 10 inch×8
Filter Cloth	2.0 μm	3.0 μm	---
Temperature	under 80 °C (HT-PVC)		
Max. Pressure	0.25 MPa (at 25°C - water)		
Pump Model	MX-401RE □ -2-3S	MX-402RE □ -2-3S	MX-403RE □ -2-3S
Motor	3-Phase 200V 0.75kw	3-Phase 200V 1.5kw	3-Phase 200V 2.2kw
Dimensions [D×W×H]	797×501×1,292 mm	789×506×1,547 mm	789×506×1,802 mm
Weight	56 kg	75 kg	85 kg
Main Body/Gasket Material	PPGF/PP - EPDM		
Inlet / Outlet	Taper Sleeve Fitting 45 mm O.D.		Taper Sleeve Fitting 60 mm O.D.
Accessories	Foot Valve(PVC)		Taper Sleeve Ball Foot Valve(PVC)

\*) In case of use in a plating process with 3-4 tank turnovers per hour.

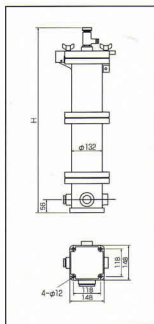
- Using a combination of housing units to form a 2-stage, 3-stage or other multi-stage filtration system, it is easy to achieve high volume filtration by parallel arrangement and high filtration accuracy by series arrangement.
- Using a combination of G-Type / E-Type filters, different kinds of cartridge filters, including our company's activated carbon filter ROCARBO series, filtration with higher filtration accuracy can be attained.
- Special accessories like union-connectors, flange-connectors, support deck (base-leg set), pressure gauge, and drain valve set are available.

### Model Identification



### Options

<b>■ Taper Sleeve Fitting</b>	
Inlet / Outlet	26 / 48 mm O.D.
Material	PVC / HT-PVC
<b>■ Pressure Gauge / Drain Valve</b>	
Type	0~0.4 MPa / 26 mm O.D.
Material	PVC / HT-PVC
<b>■ Support Base for EAX1, EAX2, EAX3</b>	
Material	PPGF



**EcoAce<sup>®</sup> PLUS 1H   EcoAce<sup>®</sup> PLUS 2H   Eco Ace<sup>®</sup>PLUS 3H**

### Specifications

PPGF: Glass Fiber Reinforced Polypropylene   PP: Polypropylene   PVC: Polyvinyl Chloride   HT-PVC: High Temperature Polyvinyl Chloride   EPDM: Ethylene Propylene Diene Rubber

Model	EAX1H	EAX2H	EAX3H	EAX4H	EAX8H	EAX12H	EAX16H	EAX24H	EAX32H
Filtration Media	Cartridge 10 inch×1	20 inch×1	30 inch×1	10 inch×4	20 inch×4	30 inch×4	20 inch×8	30 inch×8	30 inch×8
Filter Cloth	0.1 nf	0.2 nf	0.3 nf	0.45 nf	0.9 nf	1.35 nf	2.0 nf	3.0 nf	10 inch×8
Temperature	under 80 °C								
Max. Pressure	0.25 MPa (at 25°C - water)								
Dimensions [D×W×H]	257×192×536 mm	257×192×796 mm	257×192×1,052 mm	280×348×600 mm	280×348×857 mm	280×348×1,113 mm	370×470×897 mm	370×470×1,152 mm	370×470×1,407 mm
Weight	4 kg	5 kg	6 kg	11 kg	14 kg	17 kg	27 kg	33 kg	41 kg
Main Body / Gasket Material	PPGF / PP - EPDM								
Inlet / Outlet	G 3/4			G 1 1/2			G 2		

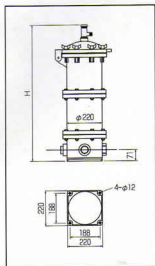
## Model Identification

Model                      Filtration Media                      Connection  
**EAX4H-C-4**

EAX4H  
 EAX8H  
 EAX12H

C Cartridge  
 E Filter Cloth

4 G1 1/2  
 5 G2



## Options

### ■ Taper Sleeve Fitting

Inlet / Outlet	32 / 48 / 60 mm O.D.
Material	PVC / HT-PVC

### ■ Pressure Gauge / Drain Valve

Type	0~0.4 MPa / 26 mm O.D.
Material	PVC / HT-PVC

### ■ Support Base for EAX1, EAX2, EAX3

Material	PPGF
----------	------



EcoAce® PLUS 4H



EcoAce® PLUS 8H



EcoAce® PLUS 12H

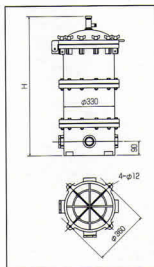
## Model Identification

Model                      Filtration Media                      Connection  
**EAX16H-C-5**

EAX16H  
 EAX24H  
 EAX32H

C Cartridge  
 E Filter Cloth

5 G2



## Options

### ■ Flange Fitting

Inlet / Outlet	JIS 10K 40A / 50A
Material	PVC / HT-PVC

### ■ Pressure Gauge / Drain Valve

Type	0~0.4 MPa / 26 mm O.D.
Material	PVC / HT-PVC

### ■ Support Base for EAX1, EAX2, EAX3

Material	PPGF
----------	------



EcoAce® PLUS 16H



EcoAce® PLUS 24H



EcoAce® PLUS 32H





# Precision Filter Exclusion For Acidic Gold Plating Solution

## EcoAce<sup>PLUS</sup> K1-2-3-4

### Model Identification

Model	Filtration Media	Power Supply	Connection	Filter Medium Code
<b>EAX1K-C-1TU-1</b>				
⋮	⋮	⋮	⋮	⋮
EAX1K	⋮	⋮	⋮	Ⓜ Cartridge Micron Rating
EAX2K	⋮	⋮	⋮	TU Taper Sleeve Fitting / PVC (Standard Model)
EAX3K	⋮	⋮	⋮	TH Taper Sleeve Fitting / HT-PVC
EAX4K	⋮	⋮	⋮	HJ Hose Adaptor / PVC
				HH Hose Adaptor / HT-PVC
C Cartridge		1 1-Phase 200V / 50Hz		
E Filter Cloth		2 1-Phase 200V / 60Hz		
		4 1-Phase 100V		
		5 3-Phase 200V / 50Hz		
		6 3-Phase 200V / 60Hz		
		7 others		

- EcoAce PLUS<sup>®</sup> for gold plating applications is equipped with a special pump and is designed to prevent gold deposition in the unit. Compared to conventional units, its service life is greatly extended.
- EcoAce PLUS Housing Series<sup>®</sup> (EAX1H/2H/3H/4H) is also compatible with the use of gold plating solution.
- For improving the plating quality and filtration accuracy, the use of binder-free filter media (melt-blown cartridges) is highly recommended.

### Specifications

Model	EAX1K	EAX1K (高流量)	EAX2K	EAX3K	EAX4K
Filtration Capacity	300 ~ 700 L/h	700 ~ 1,500 L/h	1,000 ~ 2,000 L/h	1,500 ~ 2,400 L/h	2,400 ~ 5,000 L/h
Plating Tank Capacity Volume	50 ~ 150 L	50 ~ 250 L	100 ~ 300 L	250 ~ 500 L	400 ~ 800 L
Filtration Media	Cartridge	10 inch×1	20 inch×1	30 inch×1	10 inch×1
Filter Cloth	0.1 nf	0.2 nf	0.2 nf	0.3 nf	0.45 nf
Temperature	under 60 °C				
Max. Pressure	0.17 MPa (at 25°C · water) <sup>※1</sup>		0.12 MPa (at 25°C · water) <sup>※1</sup>		0.17 MPa (at 25°C · water) <sup>※1</sup>
Pump Model	50 Hz	MD-30FXX-N-3S	MD-55FXX-3S	MD-55FXX-3S	MD-100FXX-3S
	60 Hz		MD-55FXX-3S		MD-100FXX-3S
Motor	1-Phase 100V 45w		1-Phase 200V 90w		3-Phase 200V 260w
Dimensions [D×W×H]	488×269×807 mm		506×269×1,057 mm		639×389×964 mm
Weight	11.5 kg	13.4 kg	15.2 kg	17.0 kg	25.0 kg
Main Body / Gasket Material	PPGF / PP · EPDM				
Inlet / Outlet	Taper Sleeve Fitting 22 / 22 mm O.D.		Taper Sleeve Fitting 26 / 26 mm O.D.		Taper Sleeve Fitting 32 / 32 mm O.D.
Accessories	Taper Sleeve Ball Foot Valve (PVC)				

※1 Special accessories: Motor cover / Switch box. ※2 Pump Max. Pressure

### Filtration Media Series For Eco Ace PLUS

## EcoAce<sup>PLUS</sup>

Cartridge (micron) : 0.5 · 1 · 2 · 3 · 5 · 10 · 20 · 30 · 50 · 100 · 200

- It is possible to install various filter media ranging from a selection of cartridge and melt blown filter media with various pore sizes, the ROCARBO series for simultaneous filtration and activated carbon treatment, and the company's pleated disk and radial filter cloth media.
- Better filtration accuracy with consistent reliability can be obtained by selecting the cartridge filter appropriate for the liquid type and its intended application.
- It is possible to install our molded activated carbon filters to improve product quality and uniform composition of treated solution by the removal of organic impurities.



These Specifications in this catalogue are subject to change, in the interest of technical improvement, without notice.

## SANSHIN MFG.CO.,LTD.

Head Quarters  
1-2 Hagurokhoneura Inuyama-shi Aichi  
484-0894 Japan  
Phone : +81(568)67-0466 Fax : +81(568)68-3219

<http://www.sanshin-mfg.co.jp/>

